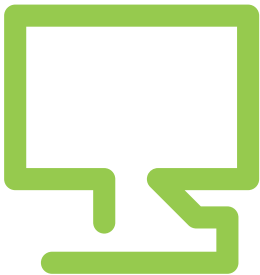


Product update

Magelis HMI & Zelio Logic starter kit

> October 2011



Following the success of our entry level Magelis HMI screens, we are pleased to announce the launch of new HMI and Zelio Logic controller starter kit. This is an ideal solution for machine builders needing high visibility and efficient control of their automation process while keeping the overall cost at a minimum.

Starter kit order reference number: VJDSTKSTOSR2

Contents of kit

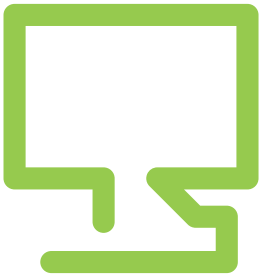
- > 3.4" Monochrome graphical touch panel with 3 colour backlights Green/Orange/Red (HMISTO501)
- > Zelio Logic Controller 24VDC 12 I-O with inbuilt clock (SR2B121BD)
- > Vijeodesigner software for HMI (VJDSNDTGSV60M)
- > Zelio Logic programming software (SR2SFT01)
- > USB download cable for Zelio Logic Controller (SR2USB01)
- > Link cable between Zelio Logic and HMISTO501 (SR2CBL09)
- > 1Phase 24VDC 1.2A Power supply (ABL8MEM24012)
- > Instruction sheet for installation

Achieve a 35% cost saving when compared with buying each component separately.

Benefits of the starter kit

- > Reduce total machine cost with starter kit
- > Reduce time to market with easy to use software





Magelis HMI benefits

- > Increase machine performance and enhance its appearance:
 - Greater visibility of process with high-quality display unit and user-friendly operation
 - Easy to change languages on HMI screen for multi-lingual work force
 - Efficient diagnostics and adaptations of user applications

Zelio Smart benefits

- > Simple to select, install and programme
- > Flexibility of choices on how to programme
 - Function block or ladder
 - Adaptable to future requirements

Features:

Magelis HMISTO501

- > Dedicated HMI and cable for communication with Zelio logic
- > 3.4 inch monochrome touch screen with resolution 200 x 80 pixels
- > Clear status indication by green/red/orange backlights
- > Easy and tool free mounting with 2 spring clips
- > 2 USB ports for downloading the configuration either by a standard
- > USB printer cable or USB memory stick

Zelio Logic Smart Relay

- > Zelio Logic can be a relay, timer, counter or a combination of these
- > Ladder or Function Block programming language
- > 12 I/O with inbuilt clock
- > 120 lines of ladder - 5 contacts and 1 coil per line
- > 200 function blocks in one program

Applications

- > Greenhouse temperature control
- > Access control - automatic gate control
- > Pump switchover control
- > Pond lighting and pump control
- > Room temperature regulation
- > Sheltered accommodation control
- > Machine control
- > Indoor/outdoor lighting
- > Alarm systems with text messaging
- > Waste compacters
- > Car wash systems
- > Pressure and temperature control of boilers
- > Automated Bollards
- > Stair lifts

For more information please contact us
on 0870 608 8 608 or visit
www.schneider-electric.com/uk